

CELL :- A410 CELL NAME:- oil pump MACHINE / STAGE :- VMC OPERATION :- Reaming

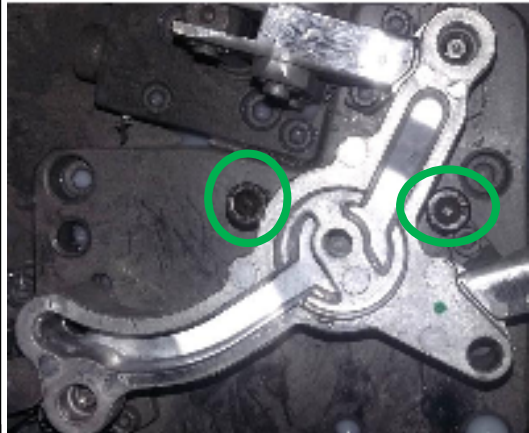
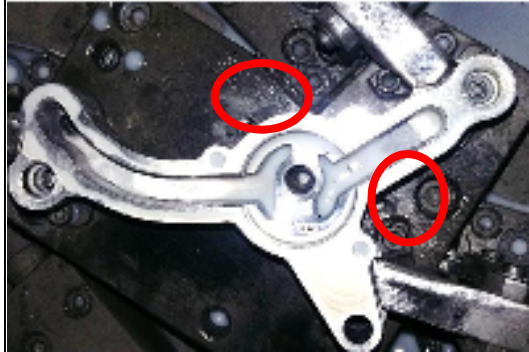
KAIZEN THEME –To avoid A410 Body Dia. 8.0 Hole damage

IDEA :-Pin to be added in fixture to avoid wrong load

WIDELY/DEEPLY:-

COUNTERMEASURE: -1) Pin added in fixture to avoid wrong load.

PROBLEM / PRESENT STATUS –A410 Body Dia. 8.0 Hole damage



BEFORE

AFTER

WHY - WHY ANALYSIS :-
Why 1 – A410 Body Dia. 8.0 Hole damage
Why 2 – Part not locate in locating hole.
Why 3 – Wrong Load.
Why4 – Current process allows wrong loading .

ROOT CAUSE- -- Current process allows to wrong load.

REGISTRATION NO. & DATE:- 22.07.2015

REGISTERED BY :- Ganesh Padwalkar

MANAGER’S SIGN :- Sunil kinkar

| | |
|----------------------|------------|
| BENCHMARK | 1 No. |
| TARGET | 0No. |
| KAIZEN START | 21.07.2015 |
| TARGET DATE | 22.07.2015 |
| KAIZEN FINISH | 24.07.2015 |

TEAM MEMBERS :-
 Nilesh Khadke, Nitin Sutar
 Ganesh Padwalkar ,vijay walunj,
BENEFITS :-

1. Prevent Re-occurrence Defect.
2. Reduce COPQ.

KAIZEN SUSTENANCE

WHAT TO DO- Point added in Sustenance check sheet .
HOW TO DO: Audit
FREQUENCY : Alternate Day

COST INCURRED FOR MAKING KAIZEN

| MATERIAL COST IN RS | LABOUR COST IN RS | TOTAL COST IN RS |
|---------------------|-------------------|------------------|
| ----- | ----- | ----- |

SCOPE & PLAN FOR HORIZONTAL DEPLOYMENT

| SR. NO. | CELL | TARGET | RESPONSIBILITY | STATUS |
|---------|--------|------------|----------------|--------|
| - | A336 B | 20.06.2015 | Nilesh Khadke | C |

RESULT :-

